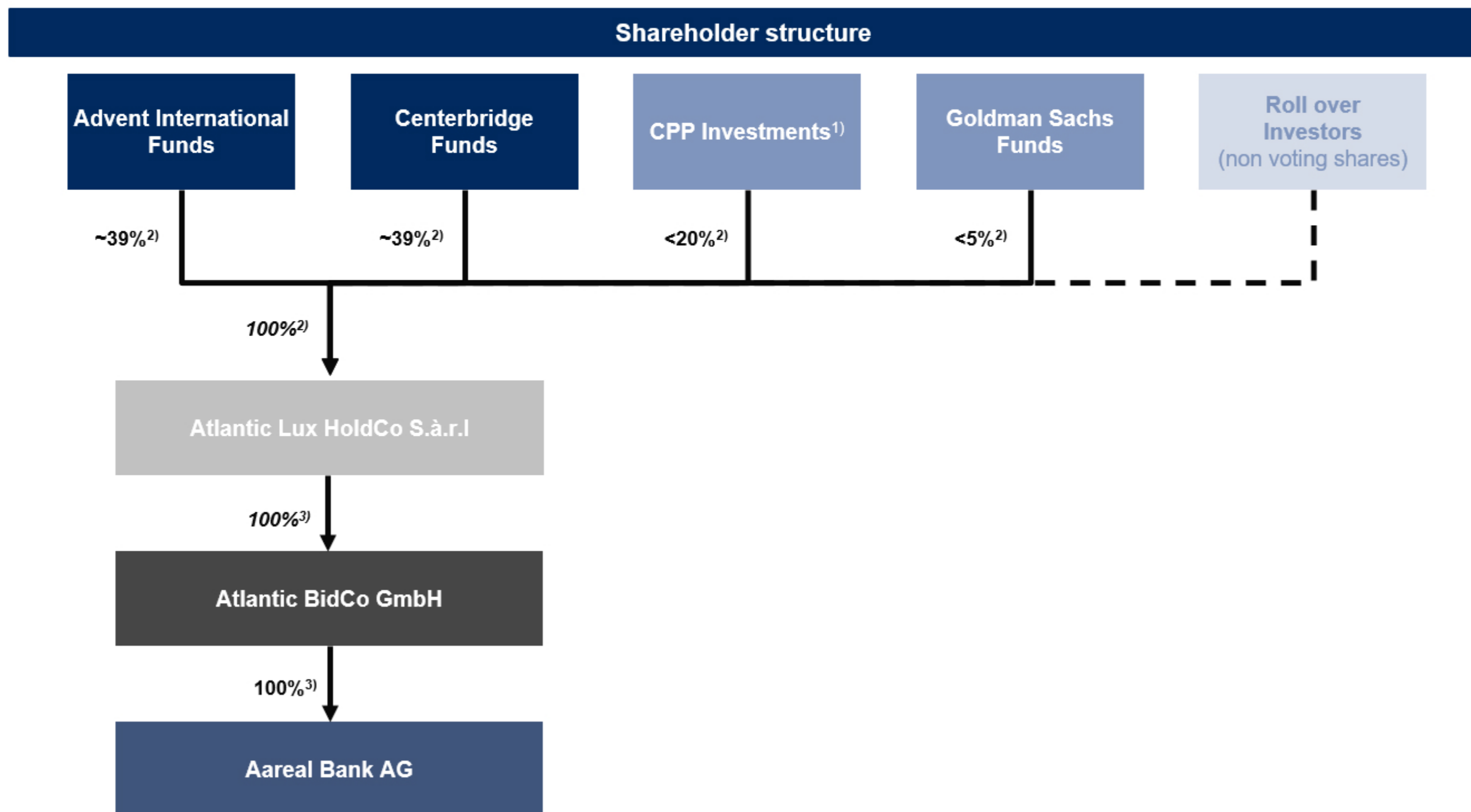


Shareholder structure



1) CPP Investment Board Europe S.à.r.l, a wholly owned subsidiary of Canada Pension Plan Investment Board ("CPP Investments")

2) Voting rights Indirect holding of participation in Atlantic Lux HoldCo S.à r.l

3) <https://www.aareal-bank.com/en/about-us/corporate-governance/share-voting-rights-disclosures>